

Quick Start Guide
快速操作指南

FS-i8

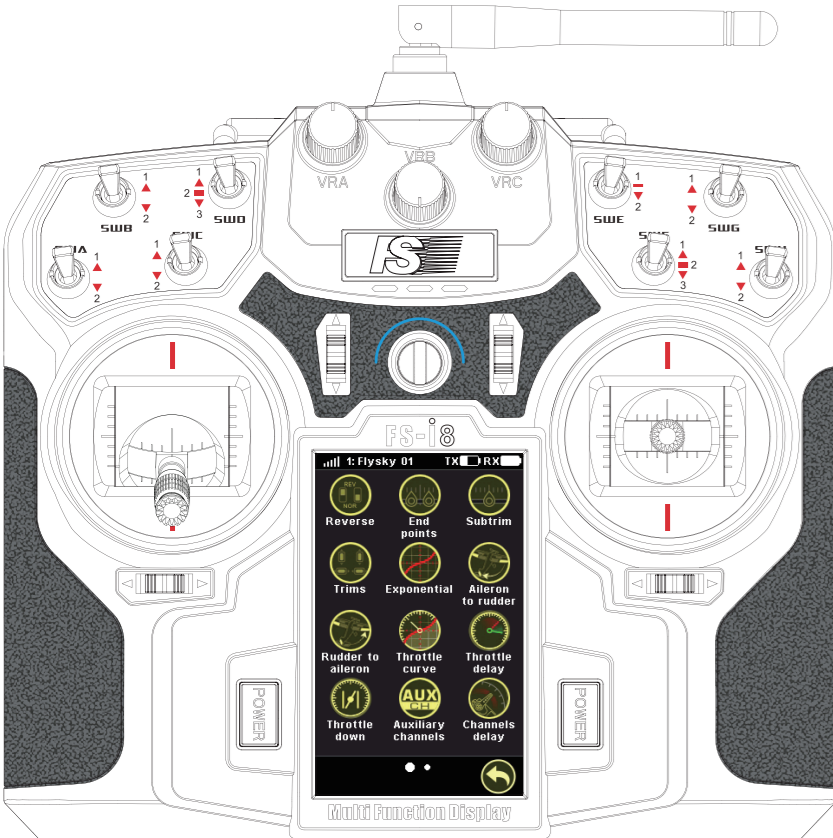
注意事项

开始操作前请务必阅读以下安全信息!

- 请不要在夜晚或雷雨天气使用本产品, 恶劣的天气环境有可能导致遥控设备失灵。
- 请不要在能见度有限的情况下使用本产品。
- 请不要在雨雪或有水的地方使用本产品。如果有液体进入到系统内部, 可能会导致运行不稳定或设备失灵。
- 信号干扰可能导致设备失控。为保证您和他人的安全, 请不要在以下地点使用本产品:

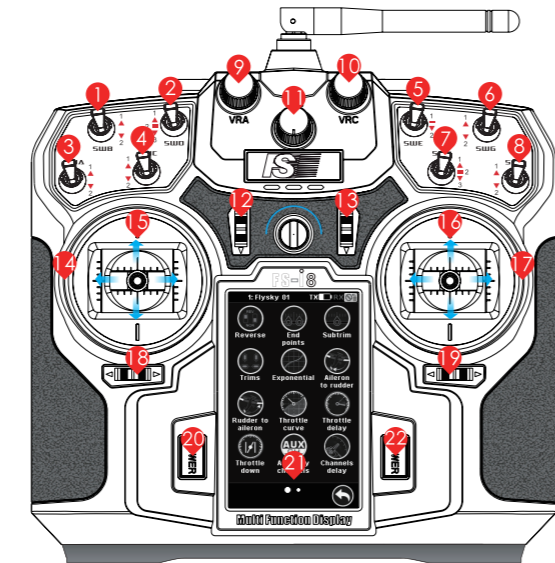


- 当你感到疲倦、不舒服, 或在摄入酒精或服用导致麻醉或兴奋的药物后, 不要操作本产品, 否则可能对自己或他人造成严重的伤害。
- 2.4GHz 无线电波段完全不同于之前所使用的低频无线电波段。使用时请确保模型产品在您的视线范围内飞行, 大的障碍物将会阻断无线电频率信号从而导致遥控失灵模型失控。
- 在使用过程中, 严禁紧握发射机天线, 否则将会大大减弱无线电传播信号的质量和强度, 导致遥控失灵模型失控。
- 在操作或使用模型后, 请勿触摸任何可能发热的部位, 如发动机、电机、定速设定等。这些部件可能非常热, 容易造成严重的烧伤。
- 遥控设备使用不当可能导致操作者或他人严重受伤, 甚至死亡。为保证您和设备的安全, 请仔细阅读使用说明书并按照要求进行操作。
- 使用前必须确保本产品与模型安装正确, 否则可能导致模型发生严重损坏。
- 关闭时, 请务必先关闭接收机电源, 然后关闭发射机。如果关闭发射机电源时接收机仍然在工作, 将有可能导致遥控设备失控或者引擎继续工作而引发事故。
- 操控时, 请先确认模型所有舵机的动作方向与操控方向一致。如果不一致, 请调整正确的方向。
- 当遥控距离持续较远时, 有发生失控的可能。请适当缩短遥控的距离。
- 仅使用厂家指定的电池。
- 请勿打开、拆卸或自行维修电池。
- 请勿挤压、刺穿电池或接触电池的金属部件。
- 请勿将电池置于高温环境或液体中。
- 请注意防止电池跌落、碰撞或震动。
- 请将电池存放在干燥阴凉的环境中。
- 如果电池损坏, 请立即停止使用。



发射机概览

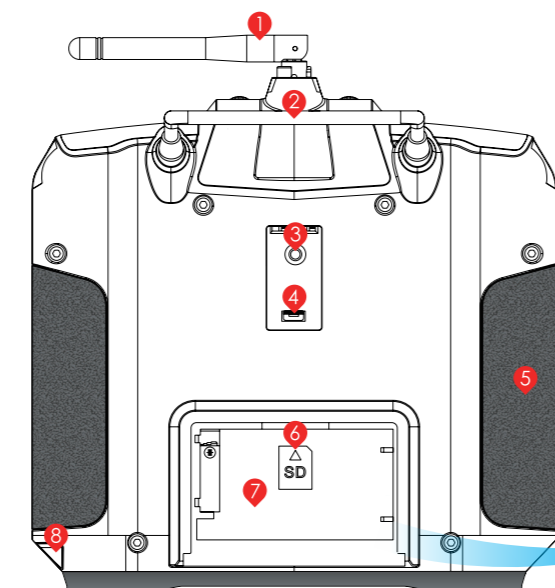
▶ 前视图:



- SWB 两档开关
- SWD 三档开关
- SWA 两档开关
- SWC 两档开关
- SWE 两档复位开关
- SWG 两档开关
- SWF 三档开关
- SWH 两档开关
- VRA 旋钮
- VRC 旋钮
- VRB 旋钮
- 油门微调
- 升降微调
- 方向
- 油门
- 升降
- 副翼
- 方向微调
- 副翼微调
- 电源开关
- 触摸显示屏
- 电源开关

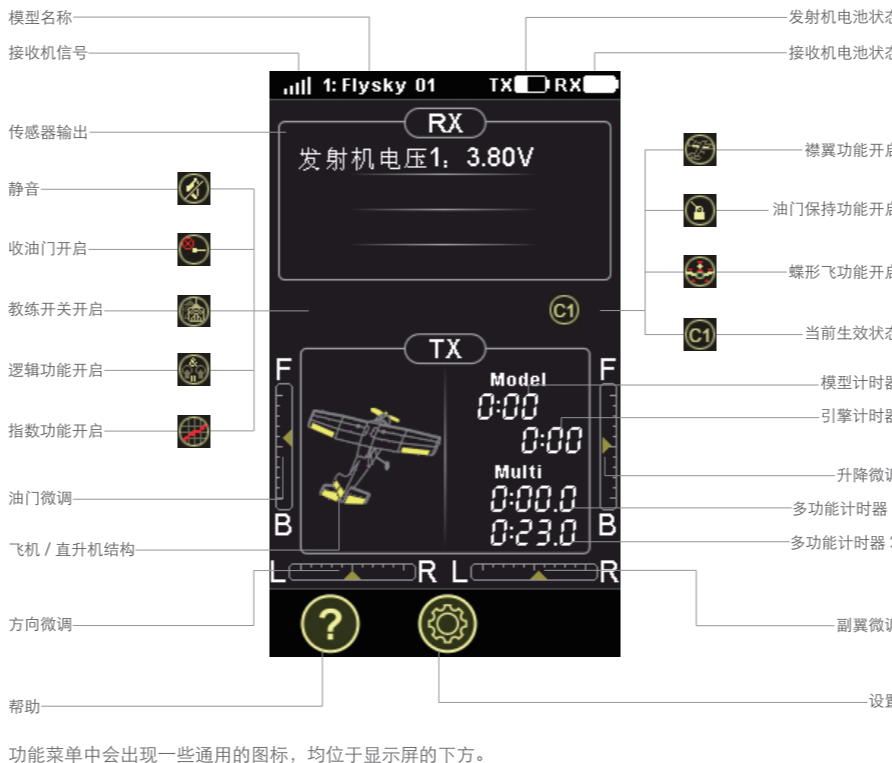
摇杆功能请以实物为准, 如需更改摇杆模式设置, 请参阅说明书。

▶ 后视图:



- 天线
- 握手
- 教练机接口
- USB 接口
- 手柄
- SD 卡槽
- 电池仓
- 手写笔
- 电池
- 电池仓盖

屏幕按键介绍



- 功能菜单中会出现一些通用的图标, 均位于显示屏的下方。
- 返回图标:** 按下该图标后返回上一级菜单或退出当前菜单。
- 复位图标:** 按下该图标后, 当前功能项所有设置恢复为出厂默认设置。
- 开关分配图标:** 按下该图标后可以将一些功能分配到设备上的 SWA ~ SWH 开关、VRA ~ VRC 旋钮或逻辑开关, 方便对该功能进行操作。
- 激活图标:** 按下该图标后可以激活或关闭当前功能。显示绿色图标时, 表示当前功能已激活, 按下后会关闭该功能。显示红色图标时, 表示当前功能已关闭, 按下后会激活该功能。

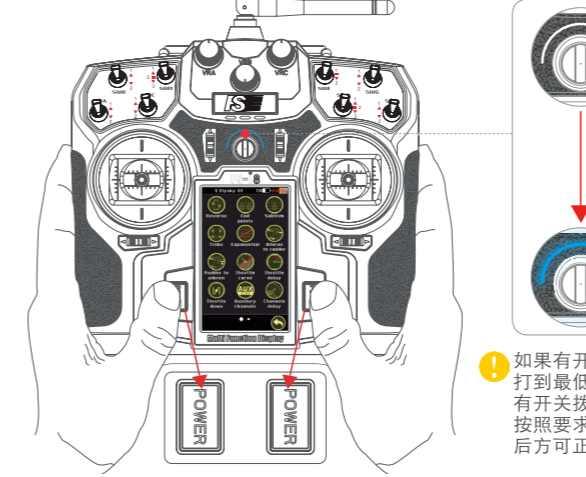
基本操作

▶ 电池安装

- 打开电池仓盖。
- 将电池装入电池仓中, 确保电池和电池仓内的金属端子接触良好。
- 盖好电池仓盖。

▶ 开机

- 确保所有开关都处于最上端位置, 油门摇杆处于最低端位置。
- 同时按下两个电源开关, 状态指示灯点亮时, 表示已开机。
- 为接收机连接电源。



▶ 对码

本发射机和接收机在出厂前已对码成功。如果您使用其他的发射机或接收机, 请按照如下步骤进行对码:

- 在发射机上选择 [设置] 图标, 从右向左滑动屏幕浏览设置菜单, 然后选择 [接收机设置]。
- 根据下表中的对应关系检查当前的 [RF 标准] 设置是否和接收机型号对应。如需更改, 请在 [接收机设置] 中选择 [RF 标准], 并在弹出的确认框中选择 [是] 来进入设置 RF 标准菜单。根据下表选择正确的标准。选择后, 按下 [返回] 图标返回 [接收机设置] 菜单。

RF 标准	接收机型号
AFHDS	GR3F、GR3E、R6B、R9B
AFHDS 2	iR4、iR4B、iR6B
AFHDS 2A 单向	A3、A6
AFHDS 2A 双向	iA4B、iA6、iA6B、iA10、iA10B



- 将对码线连接到接收机上的 B/VCC 接口。



- 将电源线连接到接收机上任意其他接口, 请正确连接正负极。连接后, 接收机上的指示灯开始快速闪烁, 表示接收机进入对码状态。
- 选择 [对码], 然后在弹出的确认框中选择 [是], 发射机进入对码界面。
- 如果选择其他协议, 对码成功后, 接收机上的状态指示灯转为慢闪或常亮, 选择 [返回] 图标手动退出对码界面。
- 将对码线和电源从接收机上断开, 然后重新将电源线连接到 B/VCC 接口, 注意电源接口正负极必须正确。
- 检查发射机能否控制模型工作, 如有异常, 重复以上步骤重新对码。

模型设置



▶ 如果您的模型为固定翼或滑翔机:

- 选择主界面的飞机结构图, 然后在飞机结构图中, 选择 [修改...]。
- 选择您的模型支持的结构。选择后, 对应项右侧的方块显示蓝色对勾。
- 选择 [返回] 图标退出菜单。

▶ 如果您的模型为直升机:

- 选择 [设置] 图标, 从右向左滑动屏幕浏览设置菜单, 然后选择 [模型]。
- 选择 [设置模型类型], 然后选择 [直升机], 在确认框中选择 [是] 进行确认, 系统进入直升机结构菜单, 菜单显示直升机相关配置项。
- 选择您的模型支持的结构, 然后选择 [返回] 图标退出菜单。

关机

- 断开接收机电源。接收机连接电源的情况下系统无法关机。
- 同时按下发射机的两个电源按键, 状态指示灯熄灭后表示发射机电源关闭。

关闭时, 请务必先断开接收机电源, 然后关闭发射机。如果关闭发射机电源时接收机仍然在工作, 系统会弹出“为了安全, 请先关闭接收机。”的提示。如果此时强行关闭发射机, 将有可能导致遥控设备失控或者引擎继续工作而引发事故。

规格参数

通道个数	8
适合机种	固定翼 / 滑翔机 / 直升机
频率范围	2.408-2.475GHz
发射机功率	不高于 20 dBm
波段个数	135
波段宽度	500kHz
2.4G 模式	第二代增强型自动跳频数字系统 (含第二代系统和第一代系统)
调制方式	GFSK
摇杆分辨率	4096 级
低电压报警	低于 3.7V 时
数据输出	Micro-USB PPM
充电接口	有 (USB)
天线长度	26mm(双天线)
机身重量	720g
输入电源	3.7V
显示方式	WQGA 3.55 寸 TFT 彩屏 262K240*400 点阵 LCD 白色背光电阻式触摸屏
外形尺寸	190*95*255mm
在线更新	有
外形颜色	黑色
认证	CE0678, FCC ID:N4ZFLYSKYI8



Thank you for purchasing our product! To find out more about our products, visit our website at www.flysky-cn.com. If you encounter any problem during use, refer to the transmitter's on-board help files or instruction manual first. If the problem persists, contact your local dealer or visit our service and support website for help: www.flysky-cn.com/service.asp.

Precautions

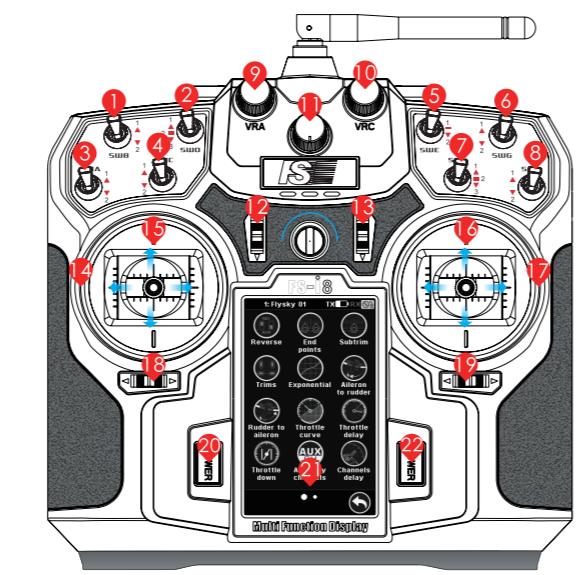
- Read the safety messages listed below before operation!
- Do not use the product at night or during bad weather conditions, like rain or thunderstorms. It can cause erratic operation or loss of control.
 - Do not use the product when visibility is limited.
 - Do not use the product on rain or snow. Any exposure to moisture (water or snow) may cause erratic operation or loss of control.
 - Interference may cause loss of control. To ensure the safety of you and others, do not operate in the following places:



- Do not use this product when you are tired, uncomfortable, or under the influence of alcohol or drugs. Doing so may cause serious injury to yourself or others.
- The 2.4GHz radio band is limited to line of sight. Always keep your model in sight as a large object can block the RF signal and lead to loss of control.
- Never grip the transmitter antenna during operation. It significantly degrades signal quality and strength and may cause loss of control.
- Do not touch any part of the model that may generate heat during operation, or immediately after use. The engine, motor or speed control, may be very hot and can cause serious burns.
- Misuse of this product may lead to serious injury or death. To ensure the safety of you and your equipment, read this manual and follow the instructions.
- Make sure the product is properly installed in your model. Failure to do so may result in serious injury.
- Make sure to disconnect the receiver battery before turning off the transmitter. Failure to do so may lead to unintended operation and cause an accident.
- Ensure that all motors operate in the correct direction. If not, adjust the direction first.
- Make sure the model flies within a certain distance. Otherwise, it would cause loss of control.
- Only use specified battery.
- Do not open, disassemble, or attempt to repair the battery.
- Do not crush/puncture the battery, or short the external contacts.
- Do not expose to excessive heat or liquids.
- Do not drop the battery or expose to strong shocks or vibrations.
- Always store the battery in a cool, dry place.
- Do not use the battery if damaged.

Transmitter Overview

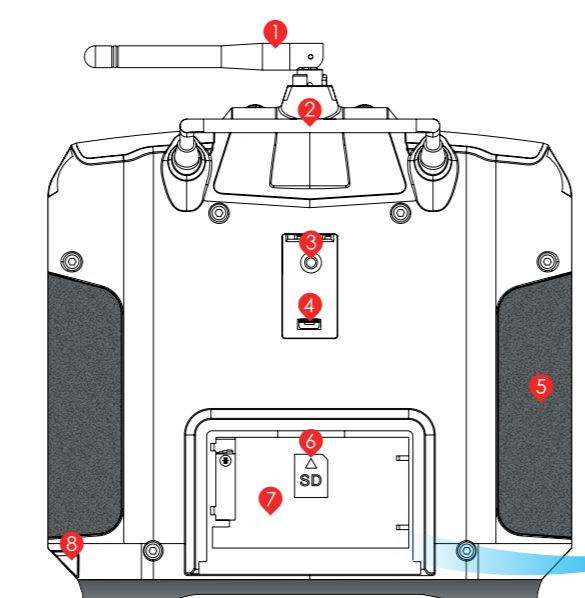
Front View



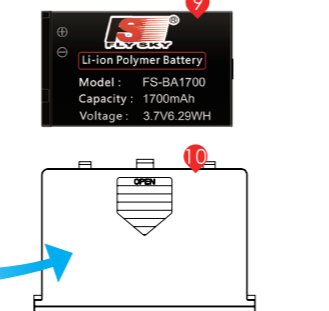
- SWB Switch
- SWD Switch
- SWA Switch
- SWC Switch
- SWE Switch
- SWG Switch
- SWF Switch
- SWH Switch
- VRA Knob
- VRC Knob
- VRB Knob
- Throttle Trim
- Elevator Trim
- Rudder
- Throttle
- Elevator
- Aileron
- Rudder Trim
- Aileron Trim
- Power Button
- LCD
- Power Button

The function of the sticks on your transmitter might be different from those shown above. For details about how to change the stick mode, refer to the instruction manual.

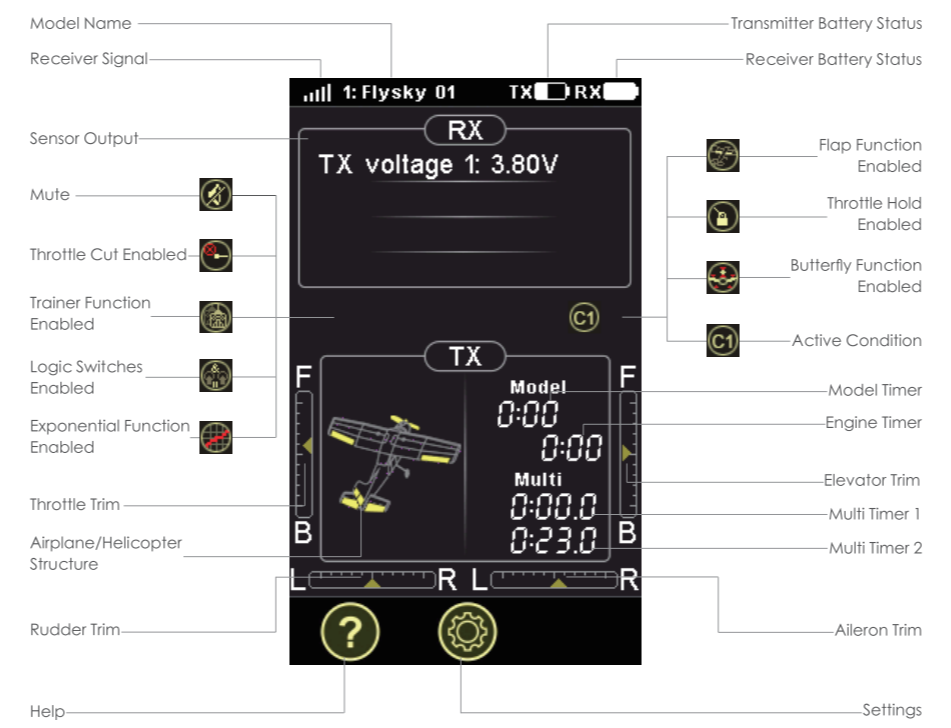
Rear View



- Antenna
- Handle
- Trainer Port
- USB Port
- Grip
- SD Card Slot
- Battery Compartment
- Sylus
- Battery
- Battery Compartment cover



Screen Overview



These are located on the bar at the bottom of the LCD.

- Back button: Use this icon to return to a previous menu or exit a function.
- Default button: This icon resets the current page to its default parameters.
- Assign Switch: Some functions require, or are assignable to a hardware switch (SWA ~ SWH) or knob (VRA ~ VRC).
- Enable/Disable: These icons enable and disable the current function. When the tick icon is visible the function is active.

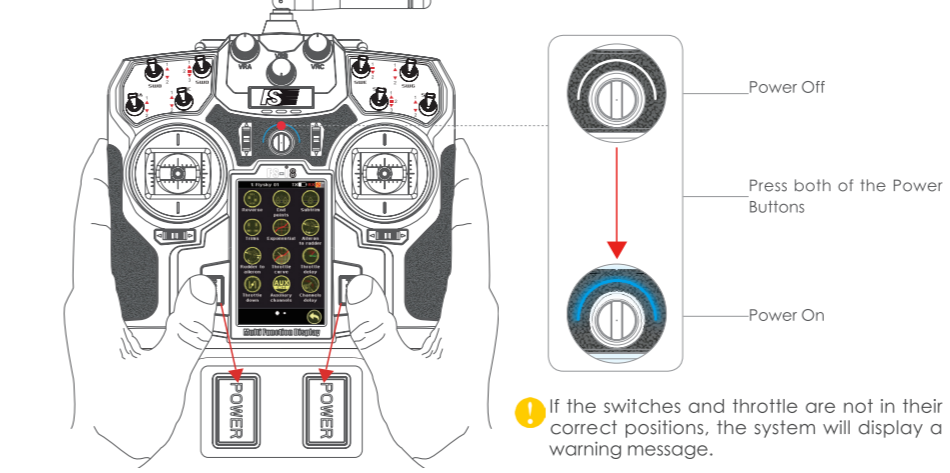
Basic Operations

Install the Battery

- Remove the battery compartment cover.
- Insert the battery making sure the contacts on the battery, and in the system are properly aligned.
- Replace the battery compartment cover.

Power On

- Make sure that all switches are at their highest position and the throttle is at its lowest position.
- Hold down the two power buttons on each side of the screen until the status indicator lights up.
- Connect the receiver power supply.



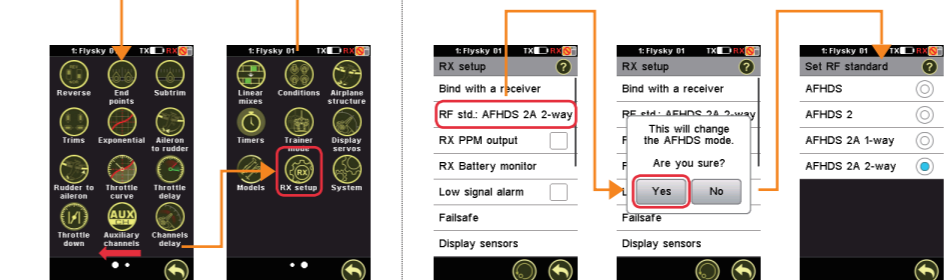
Bind with Receiver

The transmitter and receiver have been pre-bound before delivery. If you are using another transmitter or receiver, follow the steps below to bind the transmitter and receiver.

- Turn the transmitter on, press [Setup], swipe from right to left on the screen and then select [RX Setup].
- Check the current [RF std] and receiver type according to the table below. If you need to change the standard, select [RF std], and [Yes] in the confirmation box, and then the desired standard. Then select [Back] to return to the [RX setup] menu.

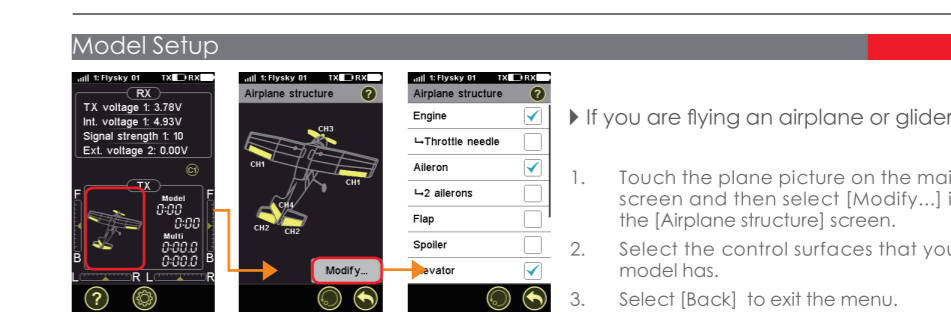
RF Standard	Receiver Type
AFHDS	GR3F, GR3E, R6B, R9B
AFHDS 2	IR4, IR4B, IR6B
AFHDS 2A 1-way	A3, A6
AFHDS 2A 2-way	IA4B, IA6, IA6B, IA10, IA10B

Note: The information contained in the table is subject to change. Please check the RF standard on your receiver's label.



Model Setup

- Connect the bind cable to the B/VCC port on the receiver.
- Connect the power to any other port with the correct polarity. The indicator will start to flash quickly, indicating that the receiver is in bind mode.
- Select [Bind with a receiver] on the transmitter, and press [Yes] to enter bind mode.
 - For [AFHDS 2A 2-way], when binding is complete, the transmitter will exit the bind menu automatically.
 - For other standards, when binding is complete, the indicator on the receiver starts to flash slowly or light up. Select [Back] to exit the bind menu.
- Remove the bind cable from the receiver and disconnect the power cable. Then connect the power cable to the B/VCC port with the correct polarity.
- Check if all the servos work as expected. If anything does not work as expected, restart this procedure from the beginning.



If you are flying an airplane or glider:

- Touch the plane picture on the main screen and then select [Modify...] in the [Airplane structure] screen.
- Select the control surfaces that your model has.
- Select [Back] to exit the menu.

If you are flying a helicopter:

- Select [Setup], swipe left to right on the screen and then select [Models].
- Select [Set model type], and then [Helicopter]. Select [Yes] to confirm. Then the [Helicopter structure] screen displays.
- Select the configurations that your model has and then select [Back] to exit the menu.

Power Off

- Disconnect the receiver from power. The system will not power off if the receiver is still connected.
- Hold down the power buttons on each side of the screen.

Make sure to disconnect the receiver's power before turning off the transmitter. If the receiver is still on, the system will prompt "For your safety, please turn off the receiver first.". If you turn off the transmitter forcefully, it may lead to unintended operation and cause an accident.

Specifications

Channels	8
Model Type	Fixed-Wing/Glider/Helicopter
RF Range	2.408-2.475GHz
RF Power	<20 dBm
RF Channel	135
Bandwidth	500KHz
2.4GHz System	AFHDS 2A/AFHDS 2/AFHDS
Modulation Type	GFSK
Stick Resolution	4096
Low Voltage Warning	<3.7V
DSC Port	Micro-USB PPM
Chargeable	Yes (USB)
Antenna Length	26mm(Dual Antenna)
Weight	720g
Power	3.7V
Display	WQGA 3.55inch Touch Resistive TFT Color Screen , 262K 240*190*95*255mm
Size	190*95*255mm
On-Line Update	Yes
Color	Black
Certificate	CE0678, FCC ID:N4ZFLYSKY18

Digital Proportional Radio Control System

CE0678 FCC ID:N4ZFLYSKY18
[Http://www.flysky-cn.com](http://www.flysky-cn.com)
 Copyright © 2013-2017 Flysky RC model technology co., Ltd
 Edition: V2.1
 Release date: 2016-5-24

